

RBR Windows® Software

Data Logger Software

The RBR Windows® software package has been designed for easy use while still providing the necessary features for logger programming, data retrieval and analysis. One piece of software does it all!

Features:

- Intuitive
- Graphical Display
- Real-time data
- Derived Units
- Export to Matlab®
- GPS Integration
- Telemetry ready
- Setup cloning

RBR's Windows®-based data logger software includes a straightforward logger setup display menu that includes options for programming start and stop time, thresholding, sampling rates for both tides and waves (TWR-2050), burst rate, burst length, averaging, and batch programming.

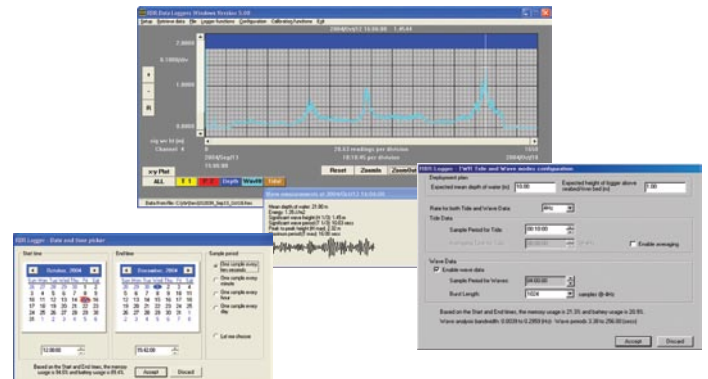
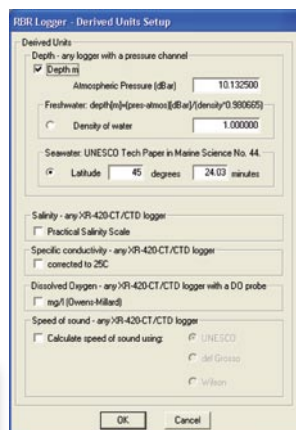
Some basic analysis features are included that allow the user to review the data graphically. Data can also be saved in various file formats for easy import into third party software packages, such as Matlab® or Microsoft® Excel®.

Derived Units

- Salinity (PSS-78)
- Depth
- Speed of Sound
- Density
- Dissolved Oxygen
- Specific Conductivity

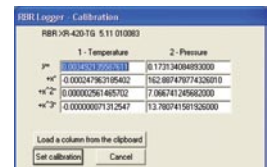
Analysis of waves & wave spectra:

- Mean level
- Tidal slope
- Significant Wave Height
- Min & Max Elevation from Mean
- Mean Period
- Significant Wave Period
- Total Energy



Logger programming is easily achieved by using the 'Setup' dialog, which allows the user to choose Start and End times, Sampling Rate, Averaging, Thresholding, as well as synchronize the logger with the PC clock. The setup dialog also indicates the expected battery and memory usage for the chosen deployment settings.

Re-calibration is done easily by entering the coefficients for each channel of the logger in the appropriate columns. These values are stored in the logger, and a complete calibration history is always available at the click of a button. In order to reduce deployment error, a log file is automatically generated for all logger setup activity.



System Requirements

- Operating System: Windows® 95/98/ME/2000/XP/Vista
- CPU: x86 133Mhz or higher
- RAM: 128MB recommended
- Communications: At least 1 RS-232 serial port, or USB
- Cost: RBR Software is free.



RBR Ltd.

27 Monk Street, Ottawa, ON Canada K1S 3Y7
 Tel: +1 613 233-1621 Fax: +1 613 233-4100
 info@rbr-global.com www.rbr-global.com

RBR Europe Ltd.

17 Cratlands Close, Stadhampton,
 Oxfordshire, OX44 7TU United Kingdom
 Tel/Fax: +44 (0)1865 890979
 info@rbr-europe.com www.rbr-europe.com